

St Albans Wood

at Turkey Creek

\$146,900



Move-in

St Albans is our newest attached home community. Our homes are approved for the USDA zero down payment program... and move in by Dec. 1st and you may also qualify for the \$8,000 First Time Home Buyer Tax Credit on your tax return.

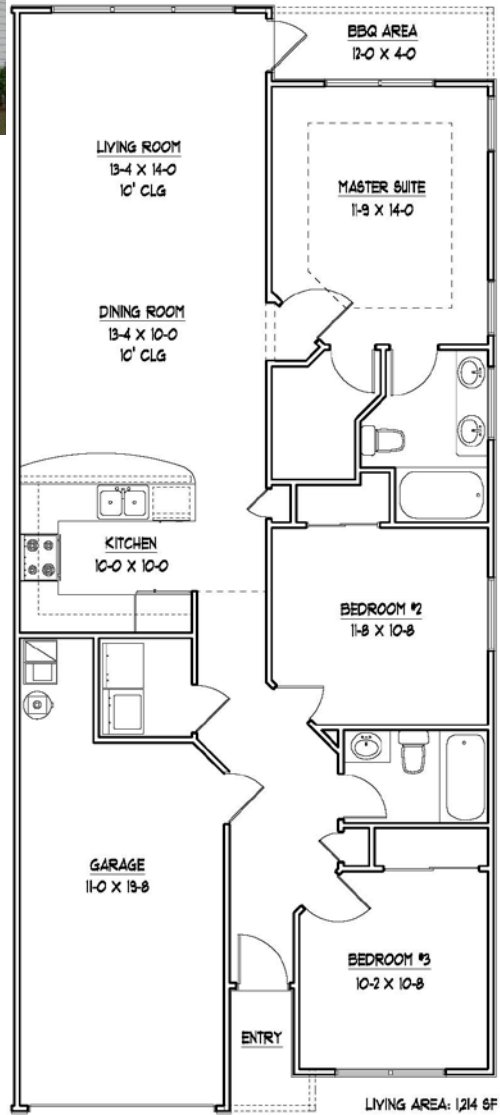
St Albans is designed to allow you to enjoy the many advantages of Turkey Creek with an energy efficient, low maintenance home ownership lifestyle. Think about it... your own home... with no lawn maintenance and no exterior maintenance at a truly affordable price!

You'll have time for those evening walks, and a cool drink with live music at the poolside Tiki Hut on the weekend. Get lunch or dinner at the Turkey Creek Clubhouse Grill.

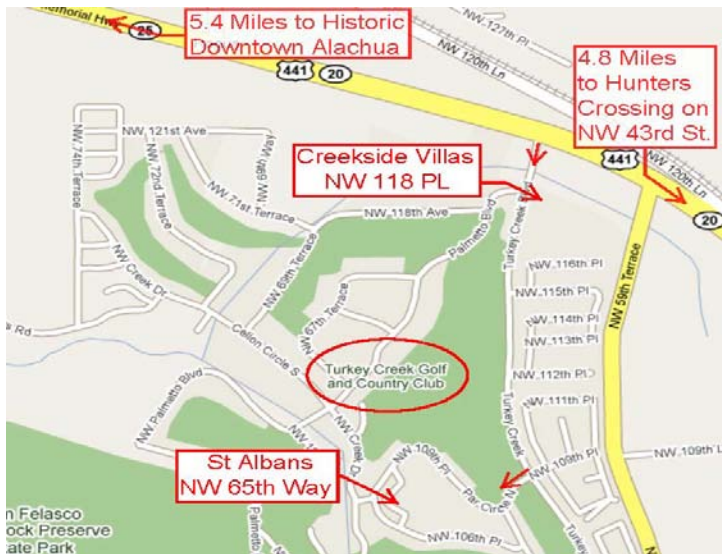
St Albans Wood is conveniently located just minutes from shopping in NW Gainesville, I-75 and SFCC; and just 10 miles from the UF campus and Shands. You'll also be pleased to know that Turkey Creek is a gated community and borders the San Felasco State Preserve.

The St Alban

1,214 Sq. Ft. 3BR 2BA.
attached single family homes



Pictures & Diagrams are for illustration only. Prices subject to change



www.Durationbuilders.com
bjones@durationbuilders.com

386-462-0511
352-494-3129

527 Turkey Creek, Alachua, FL 32615