

# St Albans Wood

at Turkey Creek

**\$142,900**



Move-in Oct '09

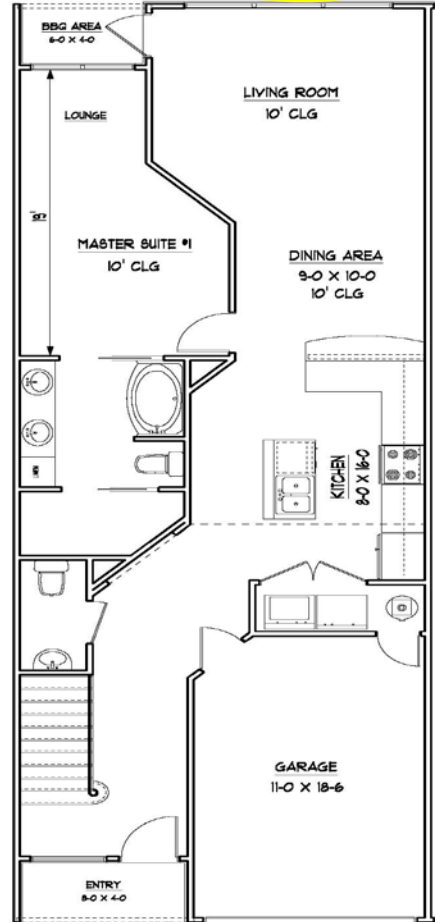
Our homes are eligible for the USDA zero down payment program. Move in by Nov. 30<sup>th</sup> and you may qualify for the \$8,000 Federal Home Buyer Tax Credit.

## The Abbey

1,240 Sq. Ft. 2BR 2½ BA.  
attached single family homes

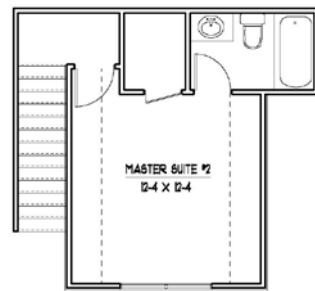
This is our newest attached home community. This home has two spacious Master Suites, each with a walk-in closet and full bath. It's designed to allow you to enjoy the many amenities of Turkey Creek with a low maintenance home ownership lifestyle. Your own home... with no lawn maintenance and no exterior maintenance... and at a truly affordable price!

You want to be close... but not too close... to work, school, shopping, dining and entertainment. St Albans Wood is conveniently located just minutes from shopping in NW Gainesville, I-75 and SFCC; and just 10 miles from the UF campus and Shands. You'll also be pleased to know that Turkey Creek borders the San Felasco State Preserve.



Pictures & Diagrams are for illustration only. Prices subject to change.

LIVING AREA: 1240 SF



[www.Durationbuilders.com](http://www.Durationbuilders.com)  
[bjones@durationbuilders.com](mailto:bjones@durationbuilders.com)

386-462-0511

352-494-3129

527 Turkey Creek, Alachua, FL 32615