

# Creekside

at Turkey Creek

MLS 300957  
Lot 89  
11774 NW 60 Drive

**\$189,900**

**The Chase**  
1,705 Sq. Ft. 3BR 2BA.

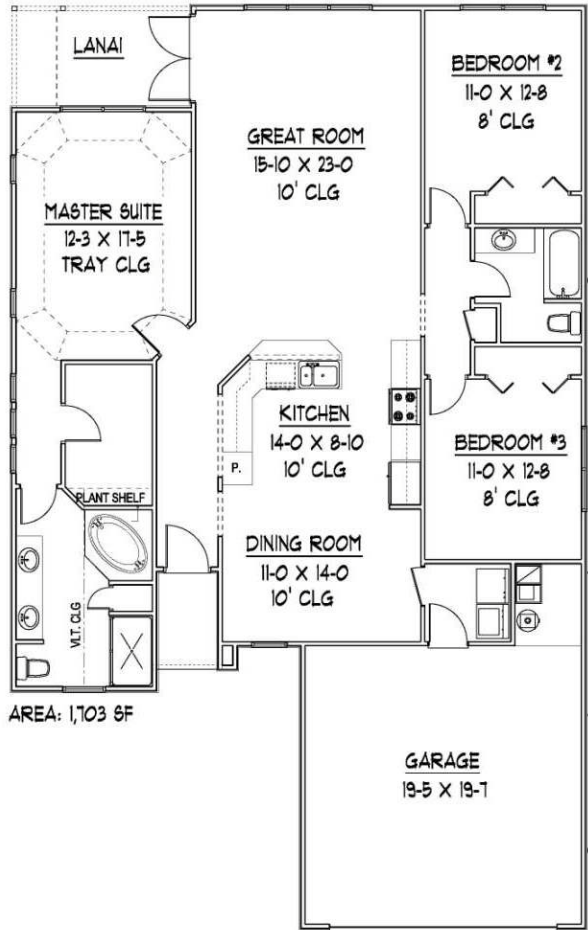


Move-in Ready

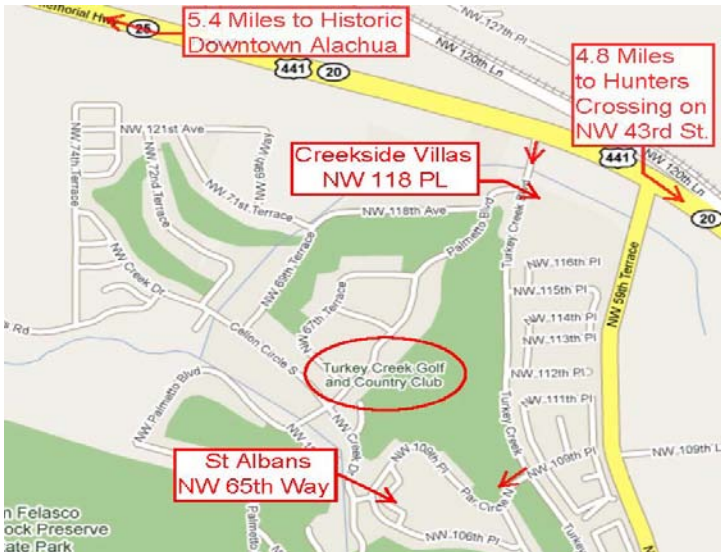
Duration is offering up to 2% of the purchase price towards the buyer closing cost on this home. Additionally, all of our Creekside homes are eligible for the USDA zero down payment program. We also provide a 1yr/10yr warranty on your new energy efficient home.

The Chase is a large, split plan home with a large open living area for gatherings. You'll love the privacy of your large master suite with tray ceiling, luxury master bath and large walk-in closet. We've added extras for you like wide base molding and crown molding on your high ceilings and the double french doors opening to your covered lanai. Don't forget your custom wood cabinets in the kitchen and baths; upgraded appliances, upgraded tile and plant shelves.

Turkey Creek, a gated community, features a pool, park/playground, tennis courts, restaurant, golf course and green space; and is located just minutes from restaurants and shopping in NW Gainesville.



Pictures & Diagrams are for illustration only. Prices subject to change.



**DURATION**  
BUILDERS, INC.

[www.Durationbuilders.com](http://www.Durationbuilders.com)  
[bjones@durationbuilders.com](mailto:bjones@durationbuilders.com)

386-462-0511  
352-494-3129

527 Turkey Creek, Alachua, FL 32615