

# Creekside

at Turkey Creek

MLS #305819  
Homesite 86  
11753 NW 60<sup>th</sup> Terr

Move-in



**\$178,395**

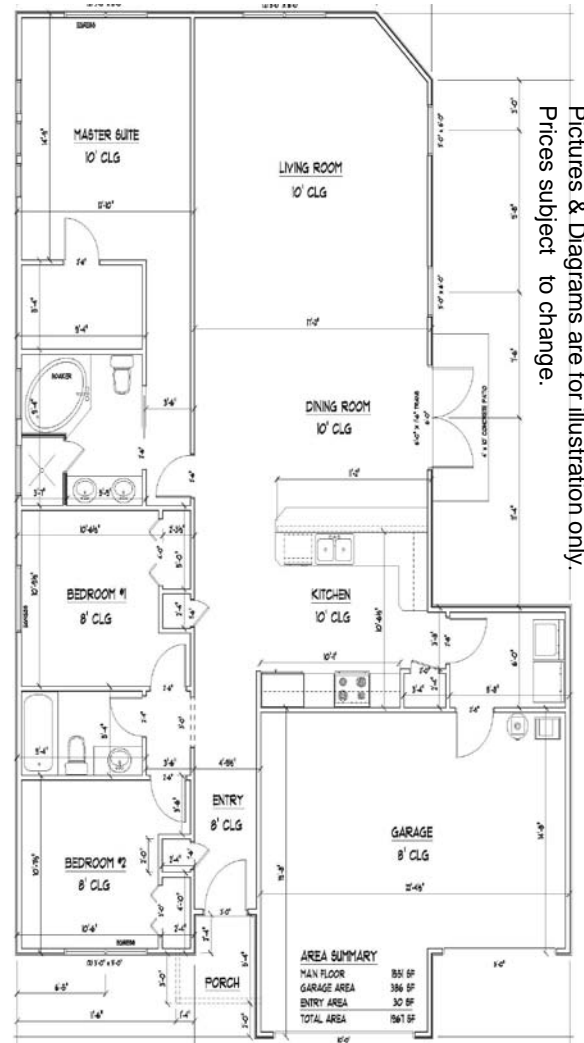
## The Wesley

1,551 Sq. Ft. 3BR 2BA.

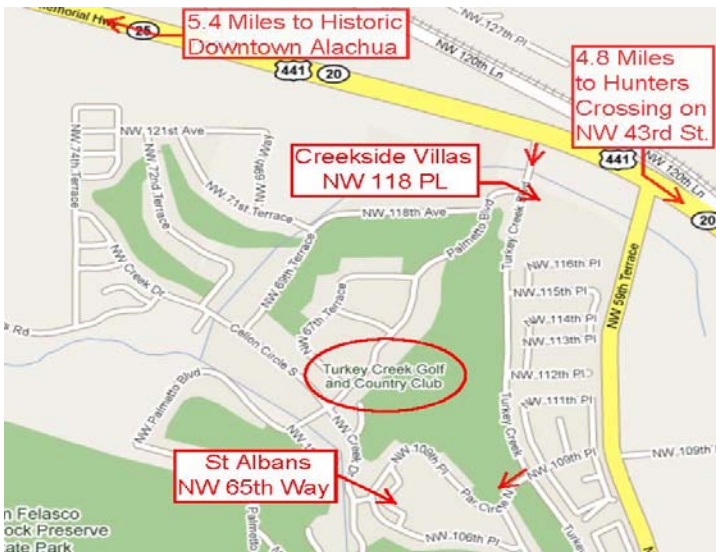
Duration is offering up to \$2,000 towards the buyer closing cost on this home. Additionally, all of our Creekside homes are eligible for the USDA zero down payment program. We also provide a 1yr/10yr warranty on your new energy efficient home.

The Wesley is custom designed for this corner lot; with double french doors to your grill station courtyard. You even have a separate garage entrance for your golf cart or storage. The oversized master suite, with private entrance, 10' ceiling and jetted tub bath are just some of the features in this Duration home. You'll love the bright, open floor plan with crown molding, plant shelves and extra closets. We've even installed granite counter tops and stainless steel appliances in your kitchen.

Turkey Creek, a gated community, features a pool, park/playground, tennis courts, restaurant, golf course and green space; and is located just minutes from restaurants and shopping in NW Gainesville.



Pictures & Diagrams are for illustration only. Prices subject to change.



**DURATION**  
BUILDERS, INC.

[www.Durationbuilders.com](http://www.Durationbuilders.com)

[bjones@durationbuilders.com](mailto:bjones@durationbuilders.com)

386-462-0511

352-494-3129

527 Turkey Creek, Alachua, FL 32615