

Creekside at Turkey Creek

MLS# 300575
Homesite 78
11735 NW 61st Dr

\$176,900

The Wesley

1,501 Sq. Ft. 3BR 2BA.

Move-in

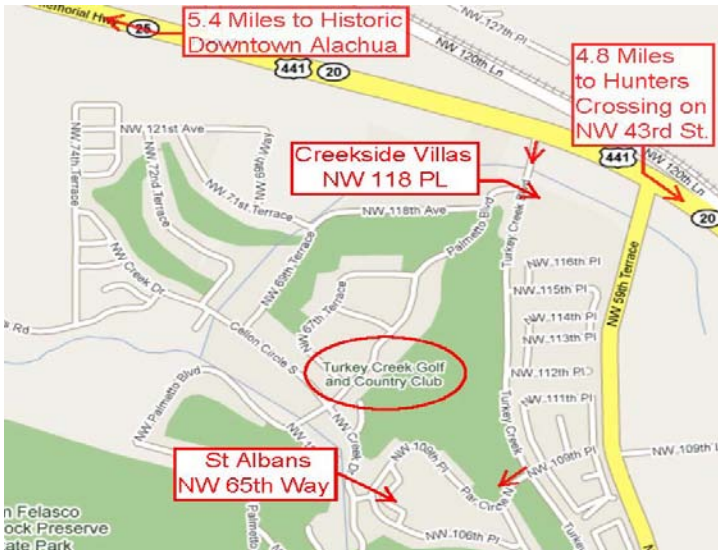
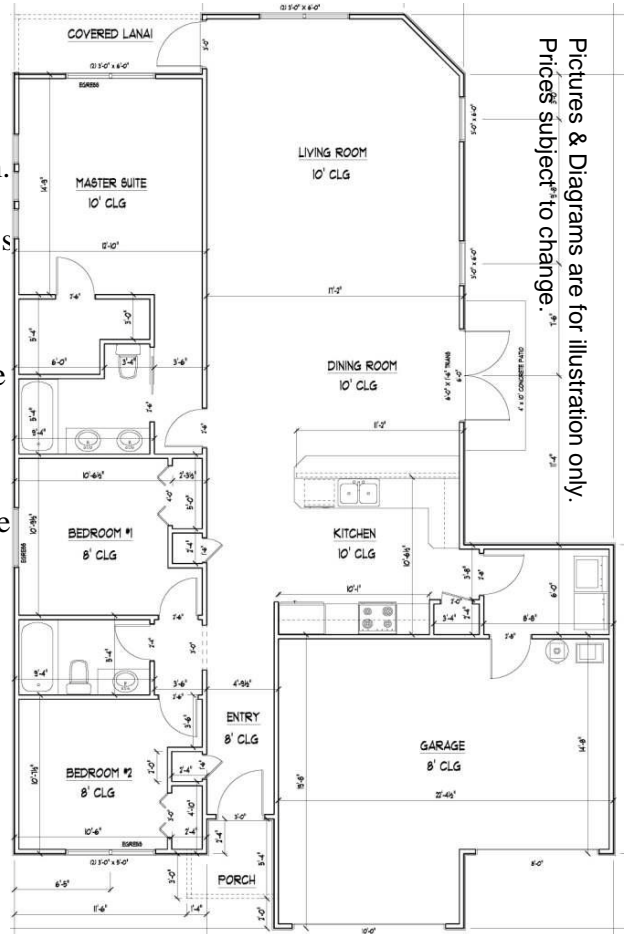


This Wesley is a move-in ready home... at a truly affordable price.

The Wesley is custom designed for a corner lot with a side yard grill-station courtyard just off the dining room. You even have a separate garage entrance for your golf cart or storage. Like every Duration home, the Wesley's standard features are the upgrades you pay for from other builders.

With energy efficient construction and low maintenance living; you'll have time to enjoy the amenities you would expect from a gated golf community. Watch the many tournaments, play a round of golf, enjoy evening walks, or watch the sun go down with a cool drink at the poolside Tiki Hut. Come home to your Life Style.

Creekside at Turkey Creek is conveniently located just minutes from restaurants and shopping in NW Gainesville and historic downtown Alachua.



DURATION BUILDERS, INC.

www.Durationbuilders.com
bjones@durationbuilders.com

386-462-0511

352-494-3129

527 Turkey Creek, Alachua, FL 32615