

# Creekside Villas

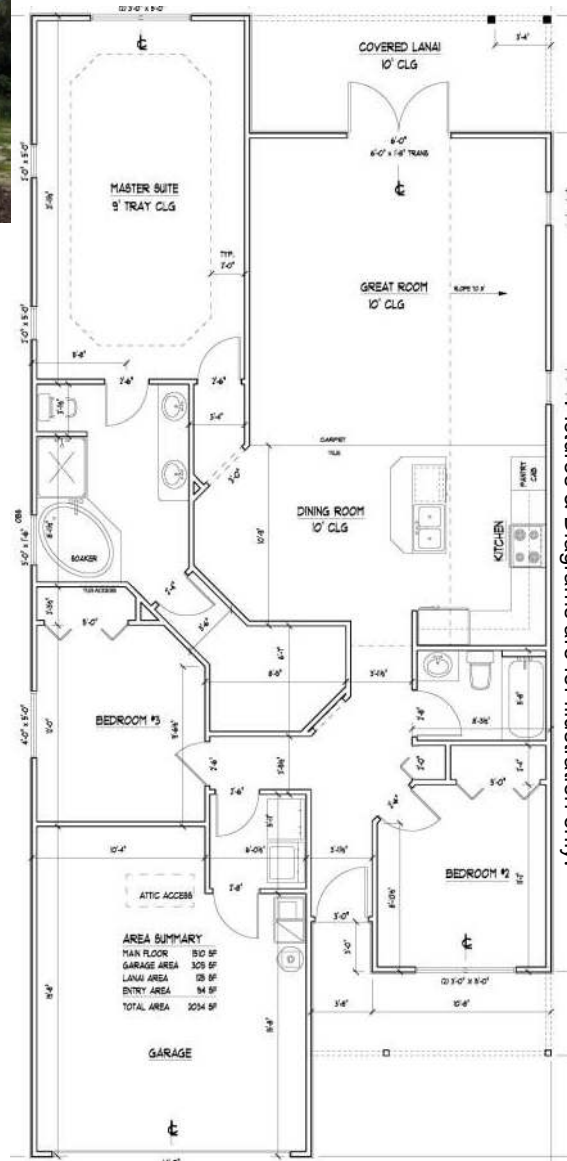
at Turkey Creek  
11787 NW 61 Terr, Alachua, Fl.



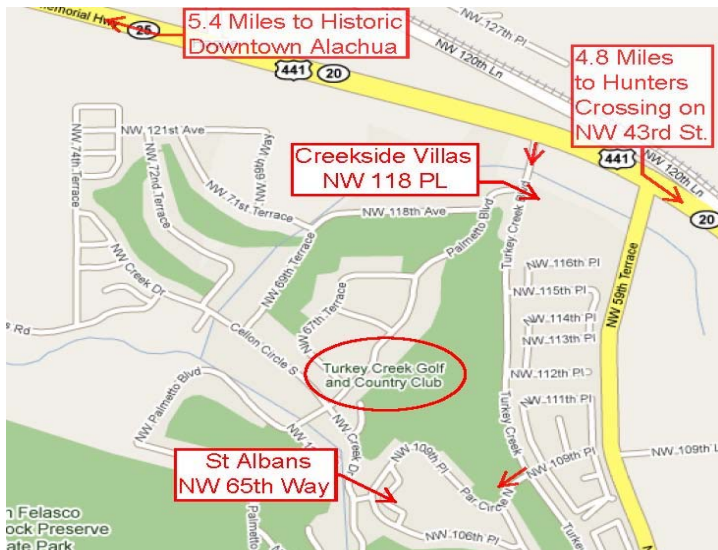
- Smooth-top self cleaning range with oven
- Dishwasher
- Over range microwave
- Custom designed cabinets with raised panel doors and crown
- Built in cabinet pantry
- Custom built bath and shower areas with tile (Master Bath)
- Oversized soaker tub in master bath
- Tile in foyer, kitchen, baths, utility room and dining room
- Wall-to-wall stain resistant plush carpet with 6 lb pad in the great room, and bedrooms
- 10' ceilings in great room, kitchen and dining areas
- Tray ceiling in master suite
- Plaster, skip trowel wall & ceiling finishes
- National brand 13 seer heat pump system
- 52" ceiling fans with light kits in master bedroom and great room
- 3 1/2" and 5 1/4" colonial base trim
- Brushed nickel finished door hardware
- Double pane, energy efficient aluminum frame windows
- Electric garage door opener with two transmitters
- 30 year, fungus resistant, architectural shingles
- Low maintenance hardi-plank siding
- Generous landscaping package per T.C.M.O.A. specifications
- R-30 blown insulation in ceilings over living areas
- R-13 Cocoon insulation in exterior walls in living areas
- Sound insulation in interior laundry and guest bath walls

## The Brittany

1,510 Sq. Ft. 3BR 2BA.



Pictures & Diagrams are for illustration only.



**DURATION**  
BUILDERS, INC.

[www.Durationbuilders.com](http://www.Durationbuilders.com)

352-494-7474

386-462-0511

11787 NW 61 Terr., Alachua, FL 32615